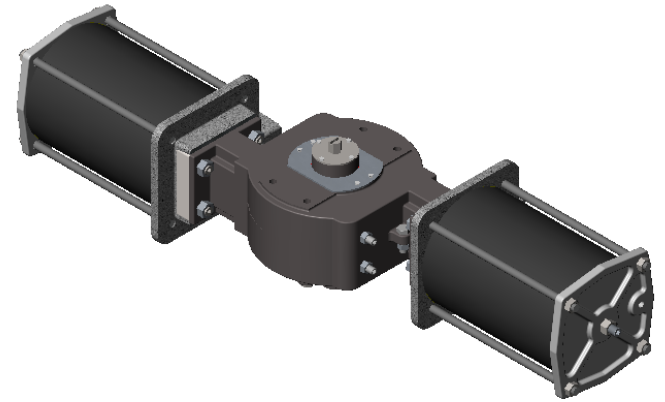


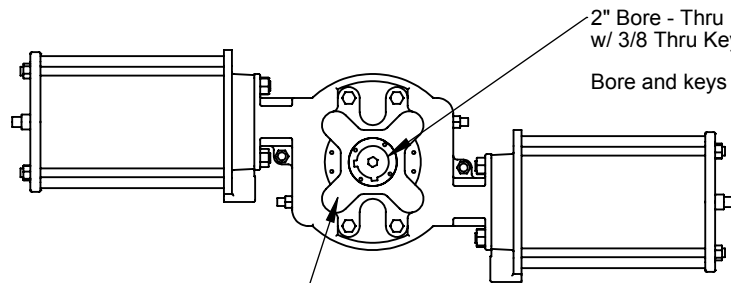
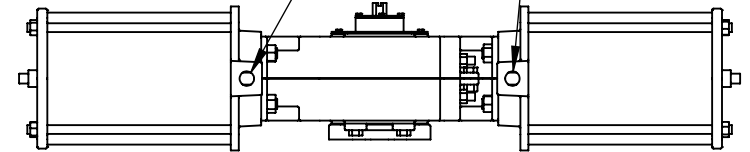
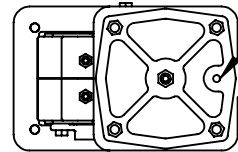
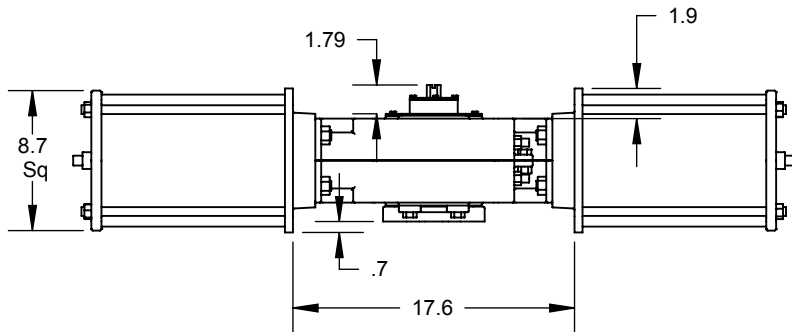
NAMUR #3 Qty 4, M5-0.8 on 30 mm x 80 mm x shown height

12" Clearance required for cylinder removal Both ends



1/4 NPT port, both ends (Up to 3/4" NPT Optional)
Apply pressure to push pistons toward body

Apply pressure to push pistons toward end caps



2" Bore - Thru w/ 3/8 Thru Keyways at 0 and 90 degrees
Bore and keys may be altered to suit application

Universal Mounting Plate (UMP)
Drilled and tapped to suit application

Note - relocate UMP and NAMUR Drive to opposite sides of body to reverse action

DIMENSIONS ARE IN INCHES
TOLERANCES except as shown
FRACTIONAL: ±
ANGULAR: ±
2 PLACE DECIMAL: ±
3 PLACE DECIMAL: ±

	NAME	DATE
DRAWN	EH	12/8/09
Rev B		
Rev C		
Rev D		
Rev E		

QTRCO, Inc.

F250DA08
Double Acting
8" Pistons

PROPRIETARY AND CONFIDENTIAL

THE INFORMATION CONTAINED IN THIS DRAWING IS THE SOLE PROPERTY OF QTRCO, INC. ANY REPRODUCTION IN PART OR AS A WHOLE WITHOUT THE WRITTEN PERMISSION OF QTRCO, INC. IS PROHIBITED.

MATERIAL
PROCESS
DO NOT SCALE DRAWING

SIZE **A** DWG. NO. **F250DA08-DIM-001A**

WEIGHT (Pounds): **185**

SHEET ____ OF ____
1 of 1 if not shown