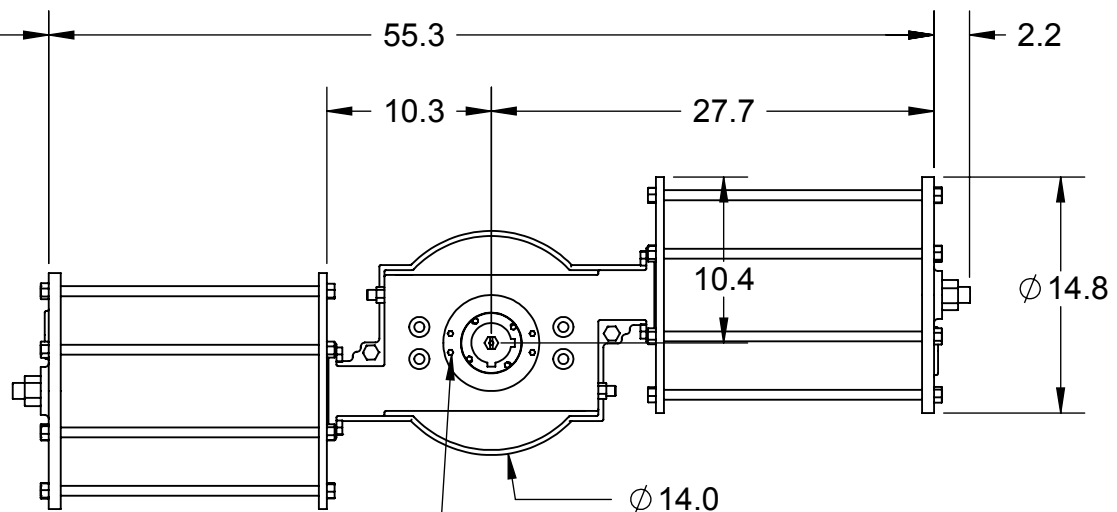
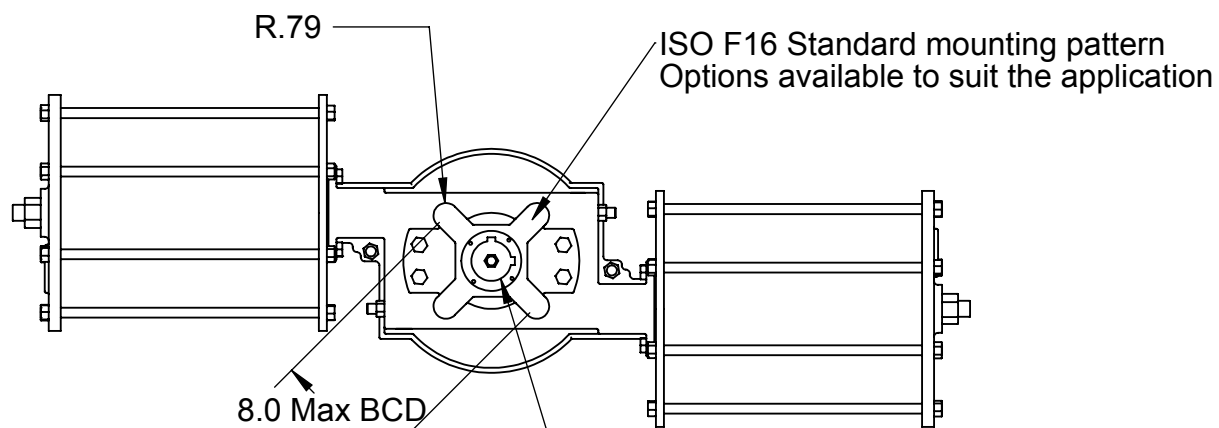
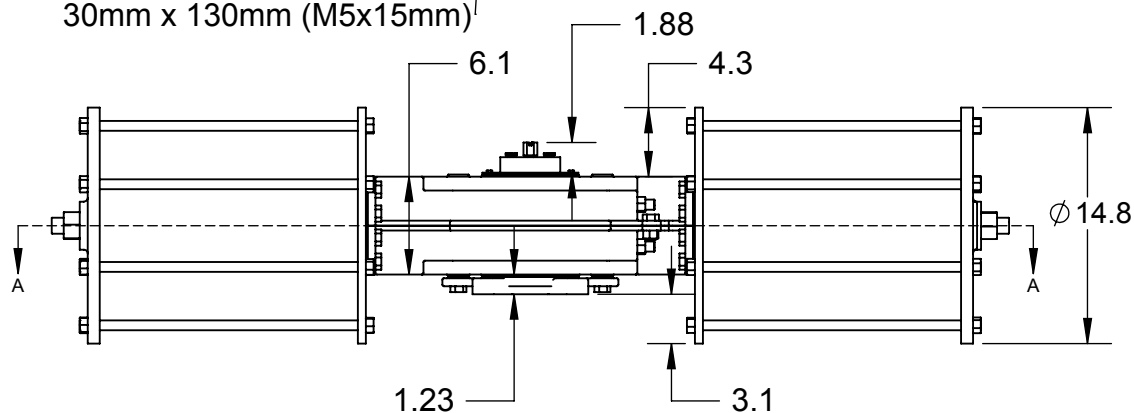


Clear space required for in-line cylinder removal (both ends)

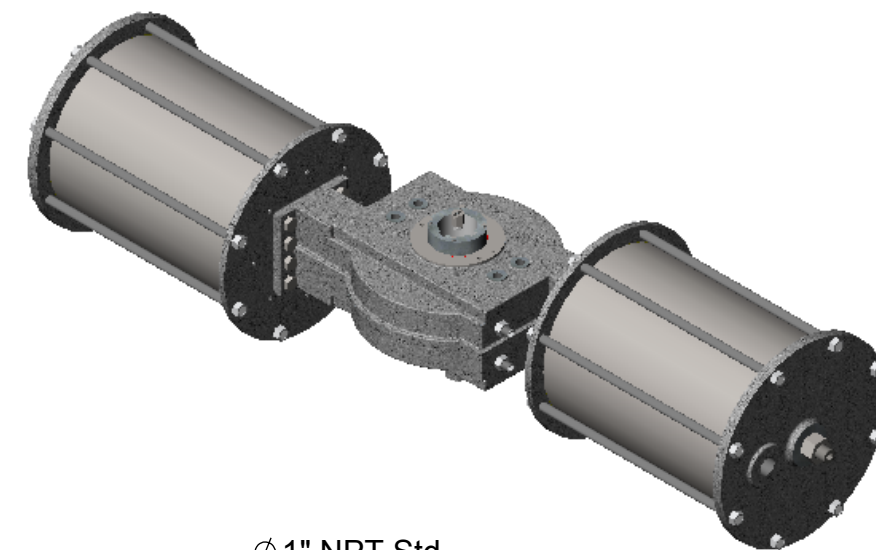


Accessory Mounting
NAMUR 3
30mm x 130mm (M5x15mm)

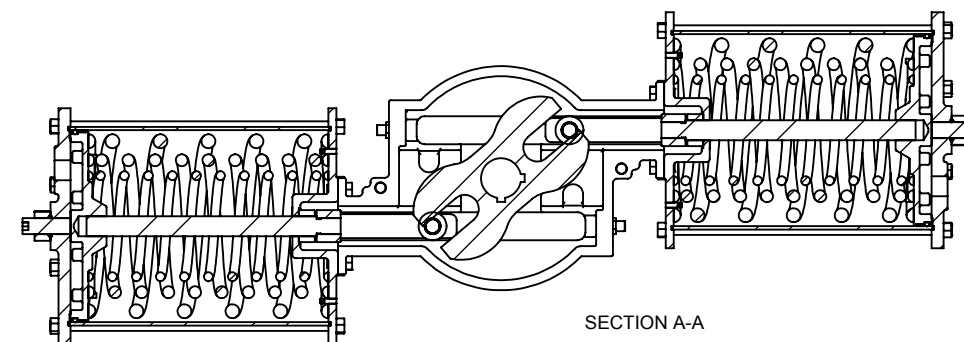
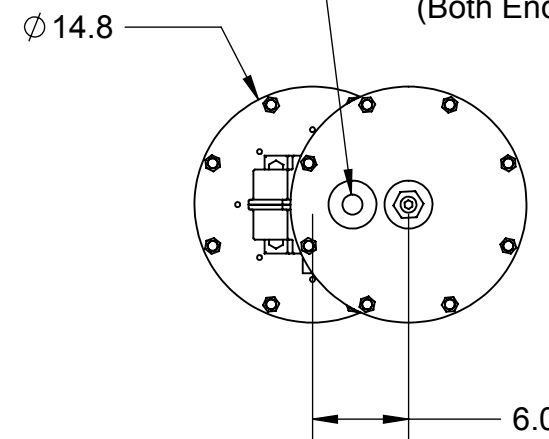


ISO F16 Standard mounting pattern
Options available to suit the application

2.5 Dia through shaft with
2 x 1/2" keyways at 0 and 90
degrees with travel stops adjusted



Ø 1" NPT Std.
Optional sizes on request
(Both End Caps)



PROPRIETARY AND CONFIDENTIAL
THE INFORMATION CONTAINED IN THIS DRAWING IS THE SOLE PROPERTY OF QTRCO, Inc. ANY REPRODUCTION IN PART OR AS A WHOLE WITHOUT THE WRITTEN PERMISSION OF QTRCO IS PROHIBITED.

UNLESS OTHERWISE SPECIFIED:		NAME	DATE	QTRCO, INC.
DIMENSIONS ARE IN INCHES TOLERANCES: FRACTIONAL ± ANGULAR: ± 2 PLACE DECIMAL ± 3 PLACE DECIMAL ±		DRAWN	EH 5/2/09	
INTERPRET GEOMETRIC TOLERANCING PER:		Rev A		
MATERIAL		Rev B		
FINISH		Rev C		
DO NOT SCALE DRAWING		Rev D		SIZE DWG. NO.
COMMENTS: Shown weight is with fiberglass cylinders. Weight = 595# with SS cylinders				B F300SR12-DIM-001A
Weight			545#	SHEET 1 OF 1