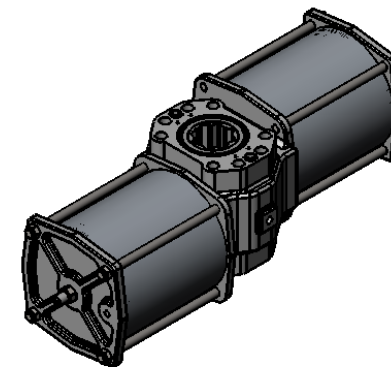
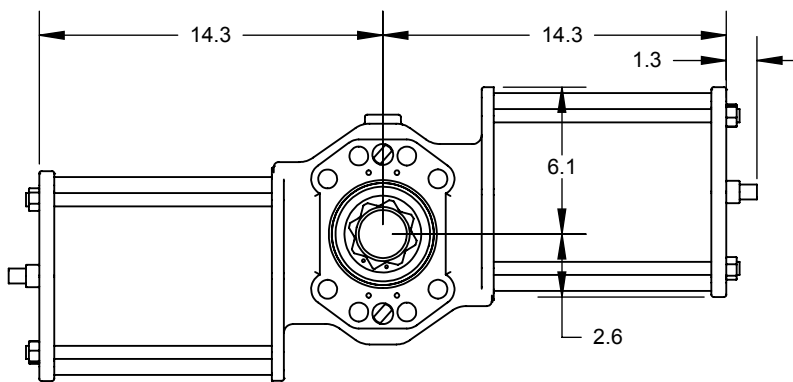


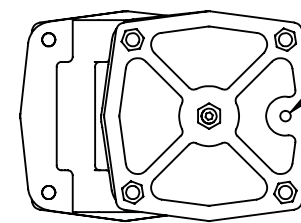
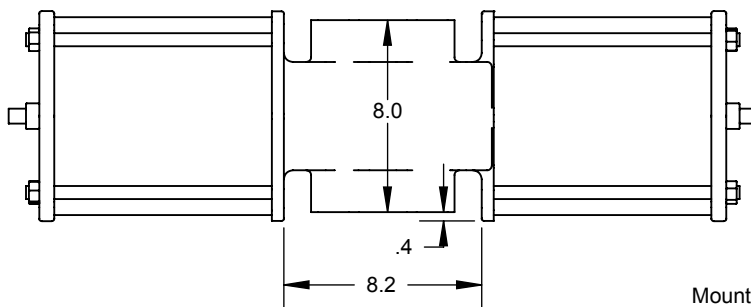
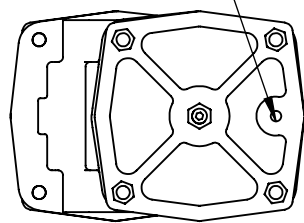
Tube pressure to both end cap ports. Apply pressure in this view to cause counter clockwise shaft rotation. Springs cause clockwise rotation when pressure is exhausted.

Tube body port only to prevent ingress of contaminants as port breathes during operation.

To reverse action, turn actuator top side down.



1/4 NPT pressure port



1/4 NPT pressure port

Accessory mounting - both sides  
NAMUR #3  
Qty 4 M5-0.8 x 3/8" Dp Thd holes  
on 30mm x 130mm rectangular pattern

Mounting pattern both sides.  
Qty 8 M20-2.5 threaded holes x 1" Deep  
Qty 4 on ISO 5211 F15 BCD (6.5")  
Qty 4 on 6.5 x 2.0 Rectangular pattern

ISO 5211 size F25 Double square female drive  
with flat sides aligned to actuator's vertical and horizontal planes  
Shown in view over rotated  
Across flat = 2.165"  
Corner diameter = 2.870"  
Depth = 3.25"  
Both ends of shaft  
Center hole thru shaft = 2.0"

1/4 NPT breather port

**PROPRIETARY AND CONFIDENTIAL**

THE INFORMATION CONTAINED IN THIS DRAWING IS THE SOLE PROPERTY OF QTRCO, INC. ANY REPRODUCTION IN PART OR AS A WHOLE WITHOUT THE WRITTEN PERMISSION OF QTRCO, INC. IS PROHIBITED.

DIMENSIONS ARE IN INCHES  
TOLERANCES except as shown  
FRACTIONAL: ±  
ANGULAR: ±  
2 PLACE DECIMAL: ±  
3 PLACE DECIMAL: ±

MATERIAL

PROCESS

DO NOT SCALE DRAWING

	NAME	DATE
DRAWN	EH	1/12/09
Rev B		
Rev C		
Rev D		
Rev E		

**QTRCO, Inc.**

**QD14SR and QS14SR  
Dimensions**

SIZE **A** DWG. NO. **QD14SR-DIM-001A**

WEIGHT (Pounds): **175**

SHEET \_\_\_\_ OF \_\_\_\_  
1 of 1 if not shown