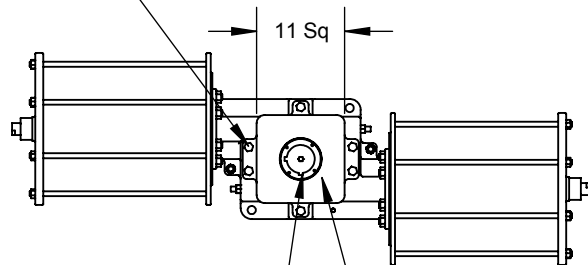


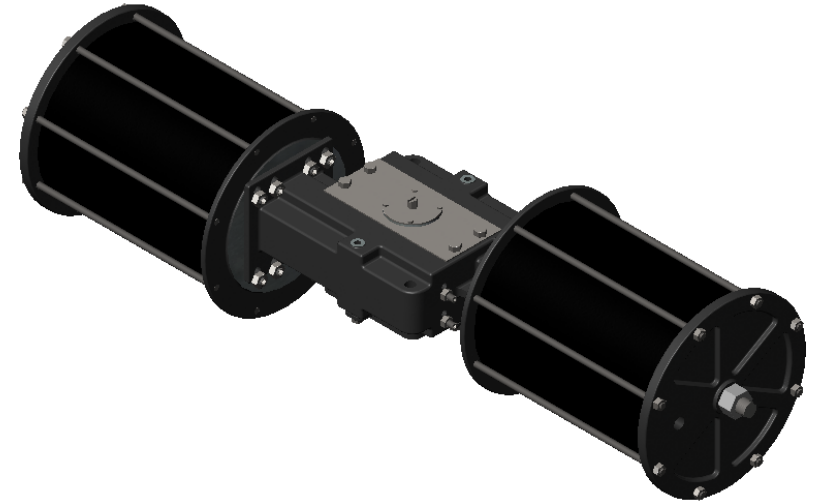
Note - the Center of Gravity is the precise center of the actuator

4x M16-2 on 3" x 13" on rectangular pattern, plus 2x M16-2 on center x 13" Both sides of actuator



Shaft geometry is to suit the user. Maximum diameter is 3.5" Standard is Qty 2, 1/2" Keyways located at 0 and 90 degrees. Only one required to drive valve.

Mounting Bolt Pattern to Suit User This is a Universal Mounting Plate (UMP) which can be removed and placed on the opposite face to enable change from fail closed to fail open action



Notations:

- Weight is balanced on the shaft axis
- Because the springs are located inward of the piston, shaft seals are not pressured and are therefore not subject to failure
- The patented Flat yoke design balances piston trust forces on the shaft bearing, providing longer life
- The sole dynamic seals are the piston o-rings which may be changed while the actuator remains on the valve by simply removing the end cap and cylinder
- The piston o-ring is a readily available standard o-ring at minimal cost
- Cylinders with a contaminant damaged seal surface may be turned end to end to provide a new cylinder surface (effectively, a spare cylinder built-in on each end)
- Externally accessible bi-directional travel stops allow ease of travel adjustment and they are located in line with the piston axis so as to not incur any side loading on the cylinders or on the shaft and yoke

COG is exact center of actuator and remains fixed as actuator is stroked

DIMENSIONS ARE IN INCHES TOLERANCES except as shown		NAME	DATE	QTRCO, Inc.
DRAWN		EH	1/17/08	
Rev B		EH	4/7/10	
Rev C		EH	9/20/10	
Rev D		JH	2/14/13	
MATERIAL		Rev E		Flat Yoke Actuator Size F375SR16
PROCESS		Weight is based on 316SS cylinders		
DO NOT SCALE DRAWING		SIZE A	DWG. NO. F375SR16-DIM-K01D	WGT (Pounds): 1147
PROPRIETARY AND CONFIDENTIAL				SHEET 1 OF _____ 1 of 1 if not shown
THE INFORMATION CONTAINED IN THIS DRAWING IS THE SOLE PROPERTY OF QTRCO, INC. ANY REPRODUCTION IN PART OR AS A WHOLE WITHOUT THE WRITTEN PERMISSION OF QTRCO, INC. IS PROHIBITED.				