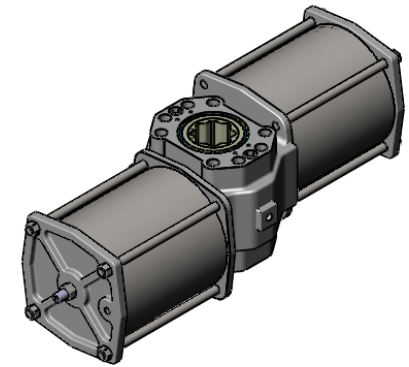
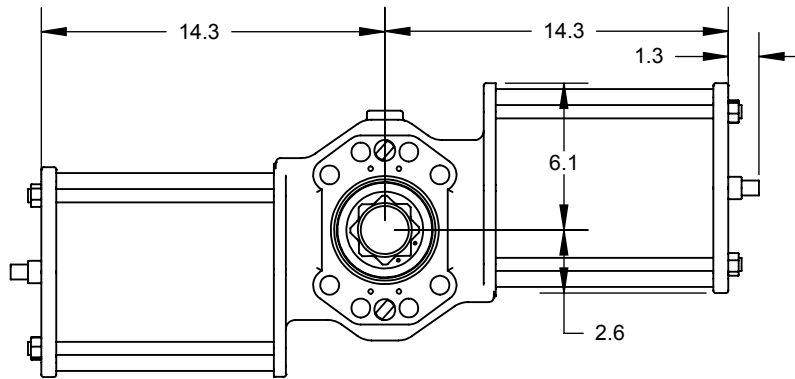


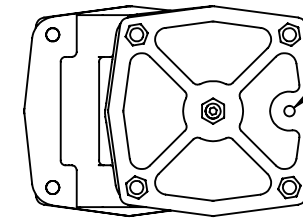
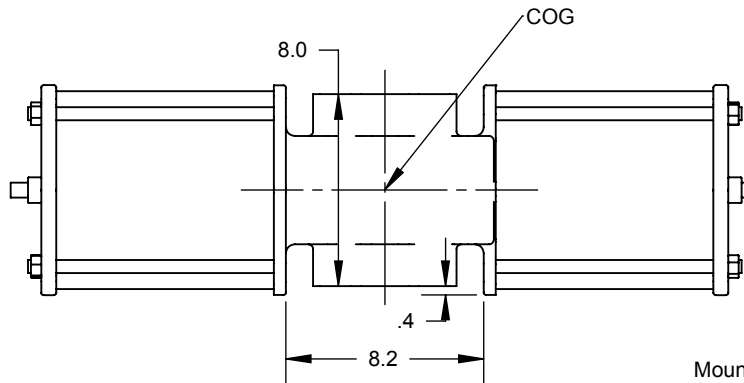
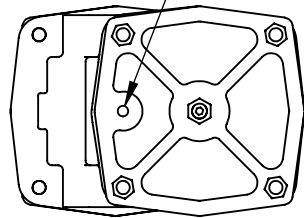
Tube pressure to both end cap ports. Apply pressure in this view to cause counter clockwise shaft rotation. Springs cause clockwise rotation when pressure is exhausted.

Tube body port only to prevent ingress of contaminants as port breathes during operation.

To reverse action, turn actuator top side down.



1/4 NPT pressure port



1/4 NPT pressure port

Accessory mounting - both sides
NAMUR #3
Qty 4 M5-0.8 x 3/8" Dp Thd holes
on 30mm x 130mm rectangular pattern

Mounting pattern both sides.
Qty 8 M20-2.5 threaded holes x 1" Deep
Qty 4 on ISO 5211 F16 BCD (6.5")
Qty 4 on 6.5 x 2.0 Rectangular pattern

ISO 5211 size F25 Double square female drive
with flat sides aligned to actuator's vertical and horizontal planes
Shown in view over rotated
Across flat = 2.165"
Corner diameter = 2.870"
Depth = 3.25"
Both ends of shaft
Center hole thru shaft = 2.0"

Weight based on 316SS Cylinder material

1/4 NPT breather port

PROPRIETARY AND CONFIDENTIAL
THE INFORMATION CONTAINED IN THIS DRAWING IS THE SOLE PROPERTY OF QTRCO, INC. ANY REPRODUCTION IN PART OR AS A WHOLE WITHOUT THE WRITTEN PERMISSION OF QTRCO, INC. IS PROHIBITED.

DIMENSIONS ARE IN INCHES
TOLERANCES except as shown
FRACTIONAL: ±
ANGULAR: ±
2 PLACE DECIMAL: ±
3 PLACE DECIMAL: ±

MATERIAL
PROCESS
DO NOT SCALE DRAWING

	NAME	DATE
DRAWN	EH	1/12/09
Rev B	EH	7/22/10
Rev C	EH	9/20/10
Rev D		
Rev E		

QTRCO, Inc.

QD14SR and QS14SR
Dimensions

SIZE **A** DWG. NO. QD14SR-DIM-C01B

WEIGHT (Pounds): 175

SHEET ____ OF ____
1 of 1 if not shown

Rev B - Relocated end cap pressure port
Rev C - Added COG