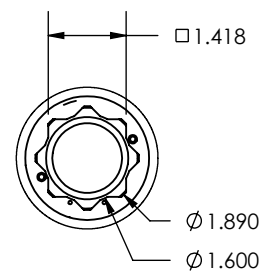
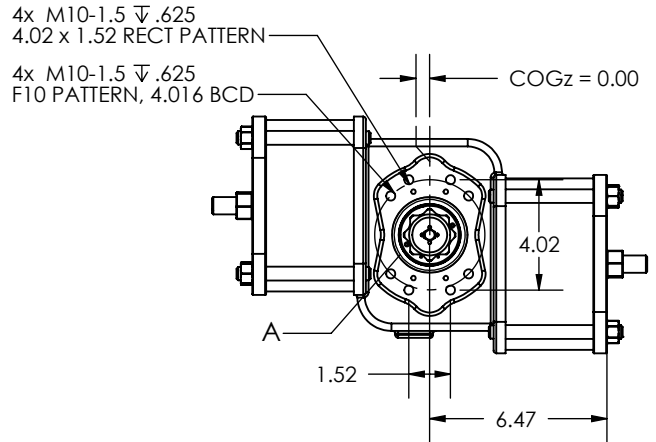
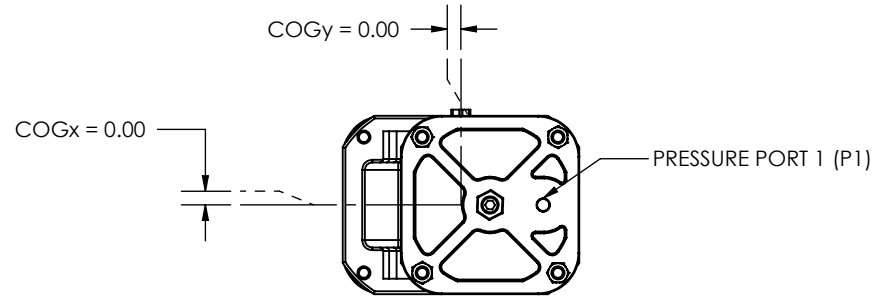
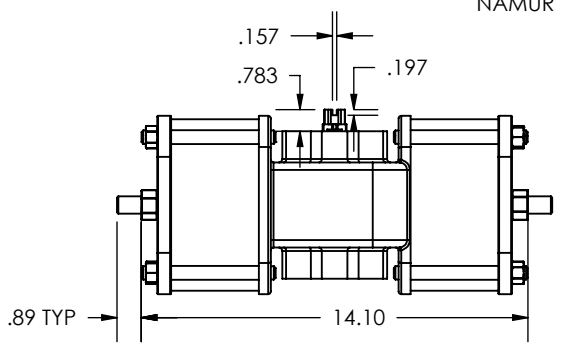
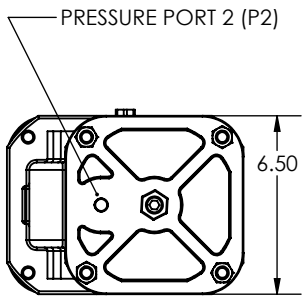
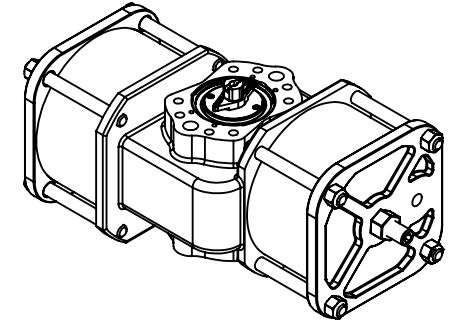
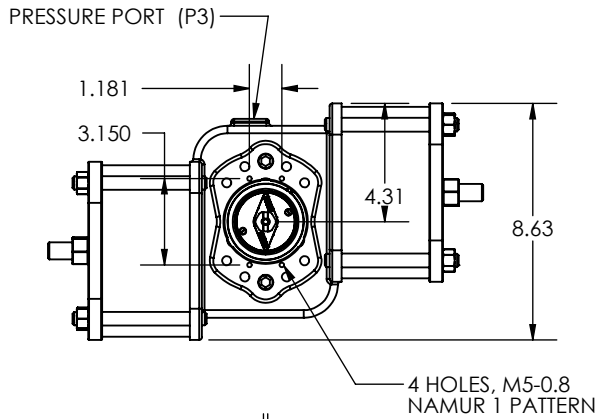


A B C D E F G H J K

1
2
3
4
5
6



DETAIL A
SCALE 2 : 7

SHOWN WITH NAMUR ACCESSORY DRIVE. IDENTICAL MOUNTING PATTERNS AND SHAFT DRIVE EXIST ON BOTH SIDES, NAMUR ACCESSORIES MAY BE MOVED TO OPPOSITE SIDE.

MOUNTING PATTERNS: F10 AND 4.02x1.52 RECT

SHAFT: 36MM FEMALE DOUBLE SQUARE, 1.000 INCHES DEEP (MEASURED FROM MOUNTING SURFACE)

PORT SIZES AS ORDERED, 1/4 NPT STANDARD



REV.	DESCRIPTION	DATE	DRAWNBY
A	INITIAL	9-JUN-2014	JRH

STATUS	APPROVAL
Released	JRH 11 Jun 14

Except as shown, Dimensions are inches and standard Tolerances are:
 Fractional +/- N/A
 Angular +/- N/A
 1 Decimal +/- N/A
 2 Decimal +/- N/A
 3 Decimal +/- N/A

DESCRIPTION

DO NOT SCALE DRAWING
PROPRIETARY AND CONFIDENTIAL
 THE INFORMATION CONTAINED IN THIS DRAWING IS THE SOLE PROPERTY OF QTRCO, INC. ANY REPRODUCTION IN PART OR AS A WHOLE WITHOUT THE WRITTEN PERMISSION OF QTRCO, INC. IS PROHIBITED.

MATERIALS AS SPECIFIED BY PRODUCT LINE STANDARDS AND ORDERED OPTIONS. WEIGHT SHOWN WITH HEAVIEST MATERIAL OPTIONS.

DWG. NO.	REVISION
Qx210DA-DIM-01	A
WEIGHT (Pounds): 51.708	SHEET 1 OF 1 1 of 1 if not shown