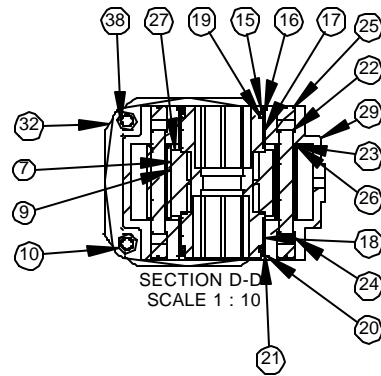
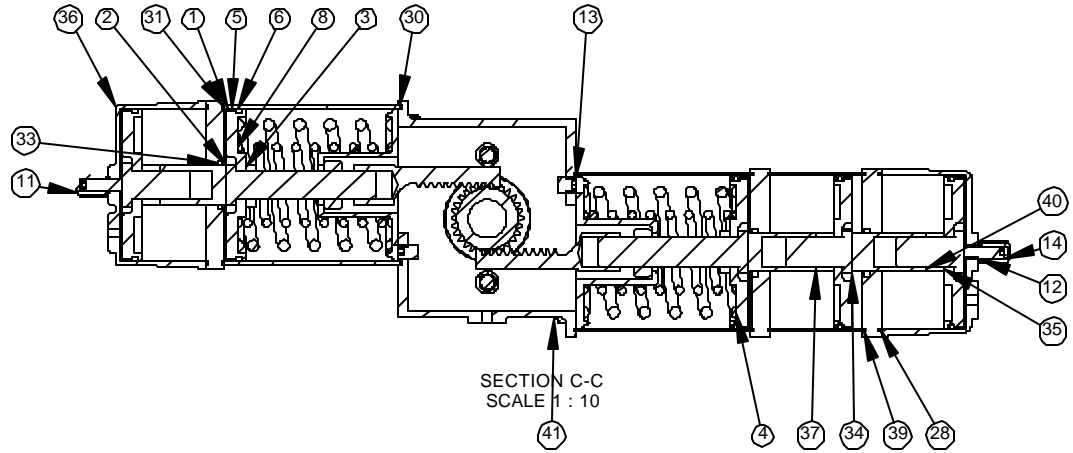
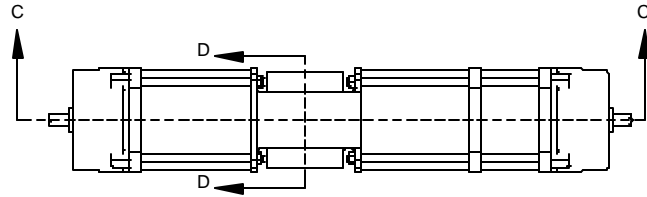


ITEM NO.	PART NUMBER	QTY.
1	X140150 X14 Piston machined	5
2	X140160 X14SR Piston Bolt	2
3	X140170 X14 Piston Bolt NUT	2
4	R14S311A-02 Q14 Spring Outer 80	2
5	R14S290A Wiper Ring	10
6	Q14 Piston o-ring 2 ROR2443	5
7	X140180 X14SR Spring retainer	2
8	R14S311A-01 Q14 Spring Inner 80	2
9	X140200 X14 Springpaq Retention Nut	2
10	X140220 X14 Cylinder attachment hex nut	8
11	R10X251b Trav Stop cover	2
12	ROR2014 Q10 O-Ring TS Cover	2
13	SSSM20-2.5x25mm Flat End	2
14	SocSet 5z8-11 x 1.75 Travel Stop Screw	2
15	X140070 Shaft	1
16	R14S130 Shaft bushing seal ring	2
17	R14S132 Shaft bushing	2
18	ROR2046 Shaft seal o-ring	2
19	ROR2344 Shaft o-ring	2
20	RWH450 Ret Ring	2
21	X140250A X14 and Q14 Shaft Thrust Washer	2
22	X140100 X14 saddle pin	2
23	R14S181 Q14 Saddle bushing - flanged - SM	4
24	A14S240 H14 Saddle pin seal plug	4
25	X140110 X14 saddle pin set screw	4
26	R14X700 X and QB14 saddle pin bushing sleeve	2
27	X140130 X14 Rack - Finished	2
28	ROR2177A X14 Flange Face O-Ring	3
29	QB140008 was X140008 QB14 Body in SS	1
30	RTR0094 Cylinder Seal ring	6
31	R14S230D SR Cylinder	2
32	Q14SE 1 inch thick Cylinder Separation Plate w .25NPT	3
33	Polypak 25002000-375 2x2.5x.375	1
34	X140220 X14DA Piston Bolt	3
35	X140230 X14DA Piston Bolt Spacer Collar	3
36	QB140020 QB14DA Cylinder-end cap	2
37	QB14SE SE Piston Pushrod	2
38	QB14SE C1 TieRod	4
39	R14S220B DA Cylinder	1
40	QB14SE-C3 outer piston pushrod	1
41	QB14SE C3 Tie Rod	4



Title QB14SE-C3 Bill Of Materials	
By & Date: Jan 14, 2006	Drawing # DQB14SE-C3 BOM Pg 2/2

Dimensions certified by: _____ Date: _____

QTRCO Dimensional Drawing