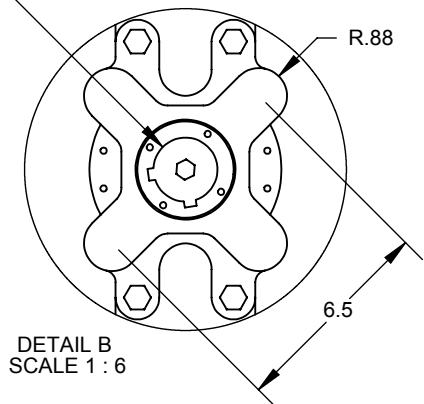
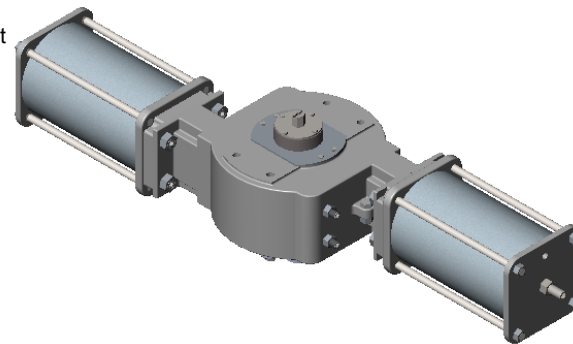
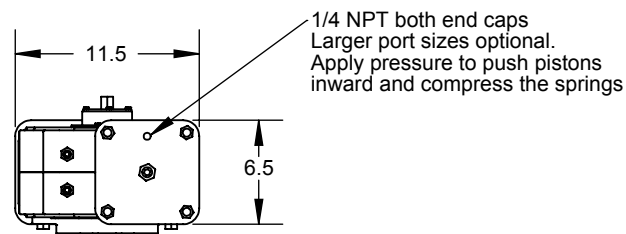
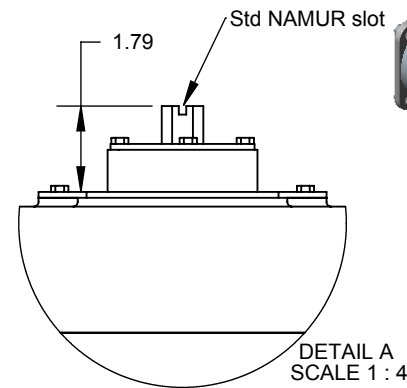
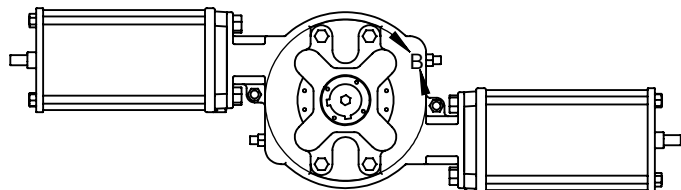


Ø2.0" Thru Bore
 2 3/8" sq Keyways
 at 0 and 90 degrees when stops adjusted
 Only one required to drive valve



COG is at exact actuator center and does not vary during operation. Because springs are located inward of the pistons, pressure to end caps pushes springs inward. This eliminates all internal seals except the piston o-rings thereby eliminating failure of such seals. Piston o-rings are readily replaced with the actuator remaining in place on the valve.

The mounting pattern is optional at the user's preference within the shown available surface.

Action reversal is accomplished simply by turning the actuator top side down and moving the mounting plate and NAMUR drive to the opposite sides.

DIMENSIONS ARE IN INCHES
 TOLERANCES except as shown
 FRACTIONAL: ±
 ANGULAR: ±
 2 PLACE DECIMAL: ±
 3 PLACE DECIMAL: ±

MATERIAL
 PROCESS
 DO NOT SCALE DRAWING

	NAME	DATE
DRAWN	EH	4/16/10
Rev B		
Rev C		
Rev D		
Rev E		

QTRCO, Inc.

Flat Yoke Actuator
 F250DA06

PROPRIETARY AND CONFIDENTIAL
 THE INFORMATION CONTAINED IN THIS DRAWING IS THE SOLE PROPERTY OF QTRCO, INC. ANY REPRODUCTION IN PART OR AS A WHOLE WITHOUT THE WRITTEN PERMISSION OF QTRCO, INC. IS PROHIBITED.

SIZE A	DWG. NO. F250DA06-DIM-01A
WEIGHT (Pounds): 137	SHEET ____ OF ____ 1 of 1 if not shown