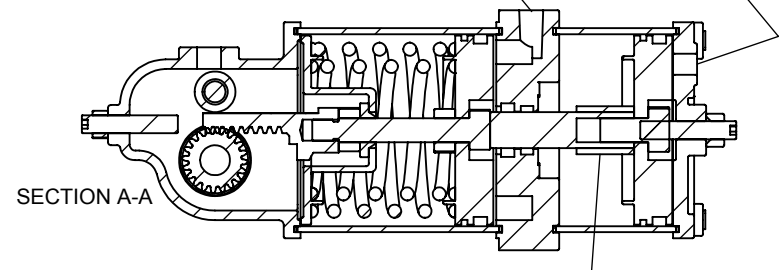
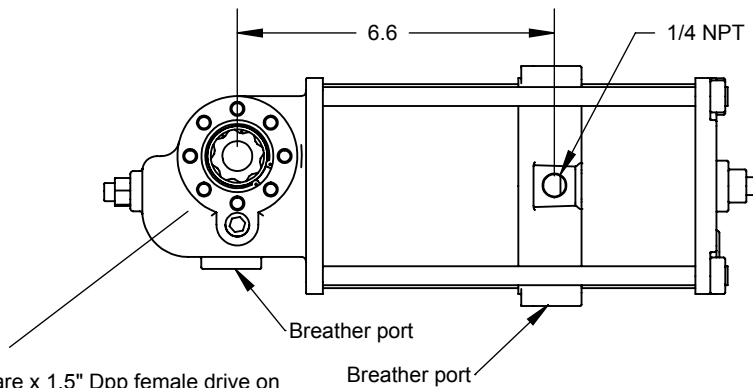


1/4 NPT

Apply pressure for ccw rotation in this view
 Pressure here for full stroke
 Pressure here for partial stroke



Length of collar determines maximum stroke

0.87" Double square x 1.5" Dpp female drive on both ends. Each side is convertible to standard NAMUR #1 male geometry via TopHat and Face Plate.
 ISO5211 F05 BCD both ends.
 Qty 8 M6-1 x 1/2" Dp holes on 1.97" BCD

PROPRIETARY AND CONFIDENTIAL
 THE INFORMATION CONTAINED IN THIS DRAWING IS THE SOLE PROPERTY OF QTRCO, INC. ANY REPRODUCTION IN PART OR AS A WHOLE WITHOUT THE WRITTEN PERMISSION OF QTRCO, INC. IS PROHIBITED.

DIMENSIONS ARE IN INCHES TOLERANCES except as shown		NAME	DATE	QTRCO, Inc.	
FRACTIONAL: ±		DRAWN	EH 9/16/09		QD and QS04SP
ANGULAR: ±		Rev B			
2 PLACE DECIMAL: ±		Rev C			
3 PLACE DECIMAL: ±		Rev D			
MATERIAL		Rev E			
PROCESS				SIZE A DWG. NO. QS04SP0DIM-001A	
DO NOT SCALE DRAWING		WEIGHT (Pounds): 24.5		SHEET ____ OF ____ 1 of 1 if not shown	